



Willard Estate Logistics

22 Cameron Street
PO Box 1555, Launceston,
Tasmania. 7250. Australia

Phone: +61 3 63348633
Facsimile: +61 3 63310263

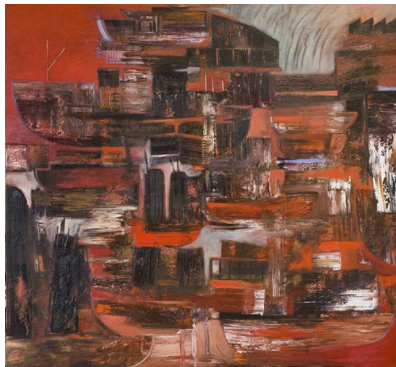
Email: logistics@willardestate.com
Web Page: www.willardestate.com

News

AUGUST 2009

Tasmanian Art

Willard Estate Logistics is proud to have a painting by Nick Glade – Wright hanging in the reception of our office.



It is rare to see commercial ships and maritime industrial themes in abstract art (we haven't seen many around) and to have a well know Tasmanian artist use this as imagery just begs for the painting to be displayed in a business such as ours. The painting is 152cm x 162cm and fills an entire section of our reception wall. Nick Glade - Wright has this to say about his current exhibition which included Docklands: "A boat's hull intrigues me as a container for conveying people, its shape vulnerable to the weather and yet its structure strong enough to survive the most violent storms, and like human existence the substance of its construction needs maintenance to avoid decay. Boats have romantic, adventurous and dreamlike connotations, voyaging across oceans, disappearing far beyond the curvature of the earth".

We hope that you can visit our office and enjoy what we are very lucky to see every day.

We also bought a couple of paintings for our home through the Arts Collect scheme. This scheme allows you to purchase Tasmanian art from selected galleries on a 12 month interest free government funded loan program. We are putting the web site for this scheme here for those that may be interested (we promised we would spread the word). All details can be viewed at www.collect-art.com.au



New Employee Willard Estate Logistics

On the 17th August 2009, Willard Estate Logistics will be introducing Hannah O'Neill into the fray of international logistics.

Hannah is a recent school leaver and was recommended to us by word of mouth when we began the process of looking for a new employee. Hannah will be joining us as a trainee and will be going through formal certification in transport and logistics as well as international business whilst working on the job under the guidance of Debi, Brett and Julie.

One of Hannah's roles will be reception and the chances are very high that when you ring our office she will be the one to answer the phone. Please take the time to introduce yourself to Hannah as I am sure you will be hearing allot from her in the future.



Tasmanian Shipping News

The AAA service continues to be strong on its schedule and is arriving and departing within the forecasted dates (rarely a day late). It is nice to begin to forget the days of ships arriving one week late or omitting Bell Bay to make up schedules. I am sure I speak for everyone when I say we look forward to the same schedule reliability when the busy times come.



Container Forecasting

Exporters of container volumes should be beginning to work on forecasts for 2010 and start to provide Willard Estate Logistics with their proposed schedules for 2010. Some lines are not servicing areas that they have traditionally serviced and as such some adjustments may need to be made. Willard Estate Logistics are talking to many lines and are always keeping abreast of the services available to Tasmanian exporters and importers.

Also, importers should be thinking about container orders for the coming months. The partners of the AAA service have already announced a Peak Season Surcharge effective 15th August 2009 ex South East Asia (see separate note in this newsletter).



Peak Season Surcharge Southbound

Most importers would be reading this with some confusion as we have been stating in our newsletters that ships are being laid up over the last twelve months due to lack of volumes. We have now received advice that there is a peak season surcharge being applied to Southbound shipments as shown below. The best way to describe this is to think of the shipping companies like OPEC. When oil prices drop, the production is decreased in order to increase demand and raise oil prices. Likewise with shipping, ships have been laid off due to lack of volume and accordingly the smaller space on the ships is now beginning to be seen as a premium and thus the creation of a peak season surcharge.

The peak season surcharges are applicable for containers leaving origin ports in South East Asia, Indian continent, China, Hong Kong, Taiwan, Japan and Korea on the 15th August 2009

PEAK SEASON SURCHARGES

20' GP Container US\$255.00 per container
40' GP Container US\$510.00 per container

The above notices have been received from most of the shipping lines at time of publication, we have asked for clarification from the other lines and are awaiting a reply.

We will update this information as more details come to hand.



Bunker Adjustment Charges – August 2009

Bunker Surcharge Adjustments North Asia / SE Asia Trades

The regular review of bunker costs has been completed for the trades between Australia and North Asia, the increasing costs of bunker fuel are reflected in the following new levels of Bunker Surcharge listed in the table below.

Area	Bound	20'	40'	Effective Date
North Asia – Japan, South Korea, China, Hong Kong	North	US\$350/20'	US\$750/40'	7 th August, 2009
North Asia - Taiwan	North	US\$350/20'	US\$700/40'	22 nd August, 2009
North Asia – Japan, South Korea, China, Hong Kong	South	US\$350/20'	US\$700/40'	7 th August, 2009
North Asia - Taiwan	South	US\$350/20'	US\$700/40'	22 nd August, 2009
South East Asia	South	US\$475/20'	US\$950/40'	25th July, 2009

Rate Restoration

One of the partners of AAA recently announced a rate restoration of US\$225.00 per TEU effective the 1st August 2009 for South Bound containers. There has only been one partner of the AAA that has sent us this notice and accordingly we have been reviewing the options for importing containers. If you are considering ordering any containers from Asia in the next few months, we would be grateful if you could kindly contact us to discuss the options available to you.

A rate restoration is separate to a Peak Season Surcharge or the Bunker Adjustment increases that have been outlined in this email.



AQIS Changes

An email was recently sent to all known importers that use or have used Willard Estate Logistics in the past in reference to AQIS changes. Please find herewith the notice in its entirety repeated. Willard Estate Logistics issued new template packing declaration document with this email notice with explanatory notes – please let us know if you require this document again.

IMPORTANT NOTICE – IMPORTERS

New documentary requirements for imports will come into effect from the 1st August 2009. All shipments entered on or after this day must meet the following new conditions.

Changes to the treatment of Plywood and Veneer Packaging:

Plywood and Veneer used as packaging material will require to be treated with an AQIS approved treatment prior to import or release from Quarantine. It will no longer be acceptable to use a Newly Manufactured Plywood Products Certificate/Declaration.

ISPM 15 standards do not apply to Plywood and Veneer that has been used as packaging material. These packaging materials must be treated with an AQIS approved method (such as methyl bromide) and be supported by the appropriate treatment certificate.

Changes to LCL and FCL Packing Declarations:

The previously used “Straw Packaging Declaration” will no longer be acceptable and has been replaced by the “Prohibited Packaging Materials Statement”. This declaration must be issued by the packer or supplier of the goods on a company letterhead showing both the companies name and address in English. This statement must read: “Have prohibited packaging materials or bamboo products been used as packaging or dunnage in the consignment covered by this document? Yes/No”. All Annual Packing Declarations must be reissued to quarantine in the new format. Examples of both Packing Declarations are attached to this notice (as well as explanatory notes).

Methyl Bromide Fumigation Certificates:

All treatment certificates issued for fumigations using methyl bromide must include a Plastic Wrap Declaration.

Please do not hesitate to contact our office to discuss in more detail.



Tasmanian Export Awards

The Tasmanian Export awards are being held in Hobart on the 16th October 2009. As Willard Estate Logistics is a service provider to the exporting community, we cannot enter the awards, however we do like to bask in the glory of our customers achievements and encourage you to enter the awards.

Entries close on the 20th August 2009 so please hurry if you have not entered.

Go to : www.exportawards.gov.au to enter.



Domestic Fuel Surcharge ranges between 5.65% - 8.35% for the month of August 2009